

The Newsletter of the



Spring 2013/Issue 1

April 17, 2013

Cheryl Carithers, Editor

Hello, everybody! This morning as I awoke, stray strands of thought brushed my mind like stray strands of hair tickling one's nose in the night. Attempting to grab them and arrange them into a neat, coherent essay while dreams threatened to overtake me, I realized that writing this note would be sort of like weaving a braid. When I got to my desk to begin braiding the thoughts together, they included spring, Texas weather, and the NTWCA.

Spring in Texas brings a few sure things. Among them are uncertain weather, bluebonnets, and the NTWCA Spring Conference. In spite of temperatures that range from frostily freezing lows to oh-my-gosh-did-we-skip-straight-to-summer highs, the bluebonnets never fail to bloom and the NTWCA never fails to hold its semi-annual conference. However, writing center folks are not inconsistent like the weather; instead, I have found them to be welcoming, friendly, and helpful. Unlike the temperatures that keep us guessing what each day will bring, writing center consultants patiently offer encouragement and expertise as they gently guide clients toward successful writing strategies.

Then when we gather at conferences, we extend that same cordiality to each other. It's been my pleasure to be welcomed and to watch you welcome new directors, consultants, and peer tutors to the

NTWCA and to see them relax and feel the warmth in the room. This organization extends a welcoming hand of friendship to those who are new to the business of teaching writing or just new to the organization, and all are soon at home here among friends.

This comfortable feeling of friendliness extends to scholarship, and the NTWCA conferences are a wonderful place to present one's research. This spring, with tremendous anticipation, we welcome the winners of the Mary Nell Kivikko Excellence in Scholarship Award: Karen Brown, Gabriella Raymond, and Jared Landin from Tarrant County College, and Meghan Roe from Texas Christian University. We will also hear from several other qualified speakers who will present some excellent scholastic enterprises. And let's not forget that we'll honor Chelsea Gray of Tarleton State University, the recipient of the Outstanding Tutor Award. These, then, are the strands of this meeting.

As a woman braids the strands of her hair, so we weave together the experiences that give us shared wisdom for our centers, and it's a joy to be with you again in this shared spirit of camaraderie.

Ka Riley
President

North Texas Writing Centers Association

Spring 2013 Conference

April 19, 2013

Hosted by
Collin College, Central Park Campus
McKinney, Texas

Program Schedule

11:00-12:00	Arrival and Registration (Main Building, Conference Room D106B)
12:00-12:45	Lunch
12:45-1:15	Opening Remarks and Business Meeting
	<i>Outstanding Tutor Award</i> Chelsea Gray, Tarleton State University
1:15-2:15	<i>Winners of the Mary Nell Kivikko Excellence in Scholarship Award</i> "Multiple Literacies in the Writing Center: Opportunities, Risks, and Rewards" Meghan Roe, TCU "Becoming a Center: Non-Traditional Relationships in a Community College Writing Center" Karen Brown, Gabriella Raymond, and Jared Landin, TCC-South
2:15-2:30	Break
2:30-3:00	<i>Tutor Presentations</i> "Why Do Writing Tutors Request Orality During Composition Revision?" Natalie Malin, TWU "Have It Your Way: Implementing Learning Styles for More Effective Tutoring Sessions" Sarah Abbe, Marie Carrier, and Erin Marissa Russell, TWU
3:00	Closing Remarks and Writing Center Tour

Campus Map

<http://www.collin.edu/aboutus/Images/CPCo9Large.jpg>

(Parking should be available in front of the main building.)

Mary Nell Kivikko Award Winners



Meghan Roe is a Ph.D. candidate in Rhetoric and Composition at Texas Christian University. She is a Graduate Instructor in the English Department, and she has worked as a peer consultant in TCU's William L. Adams Center for Writing since 2008. She is currently writing her dissertation exploring the intersection of multimodal assignments and pedagogy with the multiliteracy center or writing center.



As the Learning Lab Manager for Tarrant County College's South Campus Writing Center, **Karen Brown Campbell** helps manage the administrative challenges for the Writing Center. She also spends part of her time tutoring. Karen began her tutoring career at the same place she obtained her B.A. in English/Philosophy, West Texas A&M University. She has her M.A. in English from Baylor University and her Ph.D. in Literature and Theory from Texas Tech University (a degree she completed in December 2012) where she has been teaching composition

and literature courses for the past four years. Karen also likes to write poetry and keep a journal.

Gabby Raymond has been teaching composition and second-language composition for eleven years and tutoring writing and ESL writing for a decade. She began tutoring as an undergraduate at Western Illinois University and as a graduate student at Texas State University where she earned her M.A. in Literature. Gabby also has tutored in the national online writing lab Smarthinking. Much of what she knows about working with diverse student populations she owes to Dr. Nancy Wilson, Director of the Writing Center at Texas State. Her focus areas are in diversity, second-language writing, and cultural studies. Currently, she is a Ph.D. student in the Rhetoric and Composition Program at Texas Christian University and an Instructional Associate in the South Campus Writing Center at Tarrant County College.



Jared Landin is an Instructional Associate at the South Campus Writing Center, and he has a diverse background in writing. He has a Master's degree in English from the University of North Texas, and he has taught multiple writing courses, including Developmental Writing and both Composition I and II, at both the university and community college level. He also has worked professionally in the health care industry, so he knows a thing or two about the everyday uses of clear, effective writing. In his personal time, he likes to keep a daily journal in which he writes anything from experiences to poetry. He also enjoys the sport of basketball – both playing it and watching his beloved Dallas Mavericks – along with hiking, biking, and camping.



Outstanding Tutor Award Winner



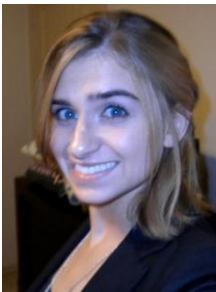
In May, **Chelsea Gray** will graduate from Tarleton State with two bachelor's degrees—one in history and one in political science—and a minor in Spanish. Last year, she was awarded the opportunity to present her original research on the work of missionaries John and Charles Wesley in Savannah, Georgia, at both Tarleton and the Texas Phi Alpha Theta Conference. Currently, Chelsea is working to establish a viable methodology for measuring the social effectiveness of microfinancial institutions in impoverished regions. These two projects have been fueled by her passion to understand individuals of the past and to improve the lives of individuals in the present. In the future, Chelsea would like to work with victims of natural disasters to help them cope with their losses and move on from the tragedy.

Presenters



Natalie Malin is about to complete her fourth semester as a doctoral student studying Rhetoric at Texas Woman's University. Natalie has taught developmental writing for several years as an adjunct English professor at Collin College and loves the stimulating and congenial rapport established in her classes. Natalie earned her M.A. in Mass Communications/Journalism from Texas Tech and her B.A. in English/Creative Writing from the University of Wisconsin-Milwaukee.

Sarah Abbe recently graduated from Tarleton State University with a Bachelor's degree in English Literature and a minor in history. She has started her first semester as a graduate student in English Literature at Texas Woman's University and is currently a graduate assistant working at the Write Site. Sarah spends her spare time traveling and getting to know other people and their cultures.



Marie Carrier is a graduating English major at Texas Woman's University who works at the Write Site on campus. She plans to continue her education and work toward a M.A. in English in the future. Marie hopes to continue to help students improve their writing for a long time to come.

Erin Marissa Russell is a junior English major/Intermedia Arts minor at Texas Woman's University, who previously studied at Brookhaven College. At both schools, Erin has worked for the campus newspapers, the *TWU Lasso* and *Brookhaven Courier* as copy editor, managing editor, and editor-in-chief and now serves as new media editor of the *TWU Lasso*. In summer 2012, she began work as a writing consultant at TWU's Write Site. Upon graduation, Erin will pursue a master's degree as well as opportunities in education, writing, publishing, and journalism.



News from the Region

Tutors from Tarleton State University's Writing Center participated in the South Central Writing Centers Association Conference in February. **Chelsae Hay, Mike Fraley, Landon Pool, and Camden Lawless** presented "Bridging the Gap Through Visual and Environmental Influences," which chronicles the transformation of the public image of the Writing Center at TSU. The tutors revamped the advertising signage on campus as well as the web page and the Facebook page using pop culture influences. Progressive and positive changes in the physical space include soft seating, intriguing lighting, and interesting artwork. Other tutors attending the conference were **Alexa Hernandez** and **Carolynn Hardwicke**, along with one of the directors, **Alice Arrington Newsome**.

Congratulations to **Kevin Williams** and his staff at the Mountain View College Writing Center for receiving the Department of the Month award in February. The award is sponsored by the Professional Staff Association at Mountain View College and awarded to departments that provide excellent service to the student body.

Steve Sherwood (TCU) recently began a two-year term as president of the South Central Writing Centers Association. He also serves as an at-large member of IWCA's Executive Board, secretary of the Texas Association of Creative Writing Teachers, and councilor for the College Conference of Teachers of English. In addition to presenting a paper titled "Bridging Breaches of Trust in the Writing Center" at the SCWCA's February conference in Corpus Christi, so far this year he has published two personal essays in *The Clearing House* and *Talking River Review* and has had two other essays accepted for publication: "Humor and the Rhetorical Proprieties in the Writing Classroom" (*The Journal of Teaching Writing*) and "Mining Humor in the Writing Center: Comical Misunderstanding as Pathways to Knowledge," co-authored with Pam Childers (*Writing Lab Newsletter*).

Cynthia Shearer and **Cheryl Carithers**, also from TCU, have begun co-facilitating a veterans' writing group, the first of its kind in the area. Additionally, Carithers gave a presentation at the SCWCA conference titled, "Veterans' Writing Groups: Bridging the Distance Between Military Life and the Campus Community." **Amy Hermanson** (TCU) also contributed to the SCWCA conference with a presentation titled "Writing Groups as Contact Zones: Fostering Independent Writers and Extending the Center's Reach through Writing Groups."

Four writing consultants from the DBU University Writing Center participated in DBU's DOXA Literary Festival (for current DBU students): **Hannah Foster, Kristin Greens, Caitlin Perry, and Carolyn Hoy**. Carolyn won first prize in the Memoir division. Caitlin took first in Poetry, and Kristin took second in the same category.

Invitation to Join the North Texas Writing Centers Association

The North Texas Writing Centers Association serves writing centers of the region as a clearinghouse for exchanging information, as a forum for discussing important writing center issues, and as a means of promoting the professional status of writing center personnel.

Membership in the NTWCA includes directors and staff of writing centers and persons interested in writing centers. Membership can be either institutional (\$50 for a single campus institution, \$25 for each campus in a multiple campus institution), or individual (\$10). Institutional memberships include writing center staff and tutors at the institution.

Name: _____

Individual Membership: _____ Institutional Membership: _____

Email Address: _____

Phone Number: _____

Institutional Address: _____

Please indicate your profile:

____ I am a Writing Center Director.

____ I am a Writing Center Staff Member (professional consultant, graduate tutor, or undergraduate peer tutor).

____ I am interested in Writing Centers (past director, faculty member, student ...).

____ Other:

**Please Send Dues To: TCC NE English Department
Attn: Elizabeth Parrish
828 W. Harwood Rd.
Hurst, Texas 76054**

CONSTITUTION OF THE NORTH TEXAS WRITING CENTERS ASSOCIATION
(REVISED SPRING 2007)

- I. The North Texas Writing Centers Association serves writing centers of the region as a clearinghouse for exchanging information, as a forum for discussing important writing center issues, and as a means of promoting the professional status of writing center personnel.
- II. Membership in the NTWCA includes directors and staff of writing centers and persons interested in writing centers. Membership can be multiple-campus institutions (\$25 per campus), single-campus institutions (\$50), or individual (\$10). Institutional memberships include writing center staff and tutors at the institution.
- III. NTWCA assesses dues annually at the fall meeting. Memberships run from September through August. Monies collected are used for communication, publication, and conference expenses.
- IV. The right to vote and to hold office extends to all individual and institutional members.
- V. The following elected officers serve a two-year term and may be elected for multiple, two-year terms:
 - a. President: The president chairs all meetings, facilitates the operations of the association, and serves as co-chair of the Membership Committee.
 - b. Vice-President: The vice-president functions as program chair and assumes the duties of the president in the president's absence.
 - c. Newsletter Editor: The newsletter editor gathers information, edits articles, publishes the newsletter, and handles mailings.
 - d. Secretary: The secretary takes minutes at meetings and reports at executive board meetings and conferences.
 - e. Treasurer: The treasurer collects dues, records memberships, reports finances and memberships at meetings, and serves as co-chair of the Membership Committee.
 - f. Immediate Past President: The immediate past president serves as an advisor and assists other officers in discharging their duties.
- VI. The president appoints the following officers for two-year terms:
 - a. Web Spinner: The web spinner maintains the NTWCA website page.
 - b. Archivist: The archivist serves as custodian of the organization's records.
- VII. The Membership Committee is co-chaired by the president and treasurer and consists of three volunteers from the organization membership. The membership committee promotes involvement by serving as the NTWCA's outreach liaisons, contacting potential members at colleges, universities, and secondary schools in the area, and conducting an annual membership drive.
- VIII. The Executive Board, consisting of the six elected officers and two appointees, meets at least twice per calendar year to plan meetings and conferences. When officers and

appointees are selected at the spring meeting, they immediately assume their duties and plan the schedule of events for the following year.

- IX. If an officer resigns, the Executive Board will appoint an interim officer to serve out the officer's term. If the resigning officer's term has more than one year remaining, the association will elect a new officer at the next regular meeting to serve out the remainder of the term.
- X. The NTWCA sponsors two conferences per calendar year.
- XI. This constitution may be amended or replaced by a majority vote of the executive board and membership at any business meeting.

NTWCA Officers

President: Ka Riley, Dallas Baptist University

Vice-President: Jennifer Phillips-Denny, Texas Woman's University

Secretary: Abigail Manuel, Collin College, Central Park Campus

Treasurer: Elizabeth Parrish, TCC-Northeast Campus

Newsletter Editor: Cheryl Carithers, Texas Christian University

Web-Spinner: Angela Petitt, TCC-Northeast Campus

Archivist: Angela Petitt, TCC-Northeast Campus